

FREE

LOCAL POSTAL CUSTOMER
NJ 08083

PRSRT STD
U.S. POSTAGE
PAID
Permit # 933
Bellmawr, NJ



SOMERDALE VOICE



Tax Collector Virginia Knecht Retires after 32 years with the Borough!

On December 31, 2020, after 32 years with the Borough of Somerdale, Virginia Knecht retired as the Borough of Somerdale Tax Collector. Ginny, as she is known by many, is a lifelong resident of Somerdale, and has raised her children Steve, Francie and Jim in this community. Due to the pandemic, Ginny has been working remotely

from home so her family, Mayor Passanante, Council and the staff surprised Ginny with a “pandemic parade” at her home, stopping to give her “socially distanced” love, well wishes, a proclamation, and gifts while Elvis’s greatest hits were playing in the background (Ginny loves Elvis!). All of this to wish Ginny well in this new chapter

of her life as a retiree. Ginny is a loyal, well-respected, and beloved member of the Borough Hall Family. It has been our honor to share so many days, laughs and life experiences with you and we wish you a wonderful, well deserved retirement!

INSIDE THIS ISSUE:

3 - Borough Hall COVID-19 Update

4 - Somerdale Historical Society
Pictures From The Past

5 - The Mayor’s Corner

6 - The Somerdale Fire Department

7 - From The Desk of
Police Chief James Walsh

9 - Vaccine Roll Out Information

10 - Somerdale Time Capsule

11 - General Vaccine Safety

11 - Camden County COVID-19 Response

12 - Diverse Books and Graphic Novels
Waiting for 8th Grade Students to Return

13 - 2021 Pet Licenses

14 - COVID-19 Information

State-of-the-Art Dental Care That Will Make You Smile.

At Somerdale Family Dental Associates, we pride ourselves on providing state-of-the-art dental services in a warm and friendly environment. We look forward to treating your entire family to the best dental care in South Jersey. Call today for an appointment.

- General Dentistry
- Pediatric Dentistry
- Cosmetic Dentistry
- Dentures
- Bridges
- Fillings/Restorations
- Dental Implants
- Crowns
- Tooth Extractions

Francine B. Rebhun, DMD, Susan B. Trager, DMD
Millard M. Braunstein, DDS Emeritus

Creating Generation of Smiles



Somerdale

FAMILY DENTAL ASSOCIATES

www.somerdaledental.com

205 North White Horse Pike
Somerdale, NJ 08083
(between Evesham Rd. &
Somerdale Rd.)
856.783.3499



White Horse
Chiropractic Center

PHONE: 856-784-5700



White Horse Chiropractic Center
Stanley B. Piltin, D.C., F.A.C.O.

Board Certified Chiropractic Orthopedist

722 S. White Horse Pike, Somerdale

856-784-5700

Named Top Doc by New Jersey Monthly Magazine 2014 - 2019

Serving the community since 1982

www.whitehorsechiropractic.com

SOMERDALE NEIGHBORHOOD & BUSINESS WATCH

We look out for each other.

To join your Neighborhood Watch Contact

Deputy Chief James Walsh

428-6324 X 2700

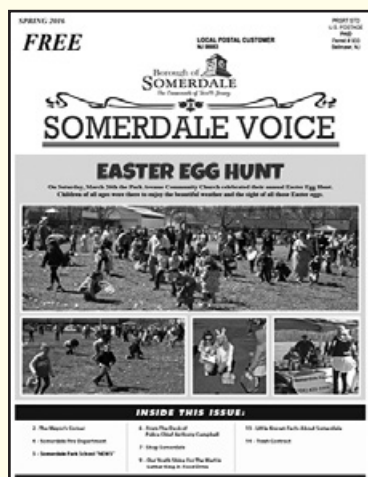
Neighborhoodwatch@somerdale-nj.com

businesswatch@somerdale-nj.com

HEAR IT SEE IT REPORT IT

Non-Emergency Number 856-783-4900

ANY SUSPICIOUS BEHAVIOR, CALL 911



SOMERDALE VOICE

*Would you like to
advertise in the
Somerdale Voice?*

CONTACT:

gehrmann@somerdale-nj.com



Ellie's Cafe

519 N Warwick Rd

Somerdale, NJ 08083

856-258-2923

elliescafenj.com

Borough Hall COVID-19 Update

For the safety of both our staff and the public, the Borough Hall continues to be closed to the public at this time but you can schedule an appointment with our staff by calling (856) 783-6320 Monday thru Thursday, 8 am to 5:15 pm. If you would like to drop off payments (traffic violation payments, sewer or tax payments, etc.), you may do so by using our drop box in the vestibule at Borough Hall.

Also, we encourage anyone that is eligible to receive the COVID-19 vaccine to register by visiting <https://covidvaccine.nj.gov/> on the State of New Jersey's website, or on the Camden County website at <https://www.camdencounty.com/vaccineregistration/>

STAY STRONG SOMERDALE!



Somerdale Human Relations Commission

Established 2009

The purpose and mission of the Somerdale Human Relations Commission is to actively encourage, develop, promote and strengthen respect for human rights and cultural inclusion among the residents of Somerdale Borough. The Commission has actively been involved in Anti Bullying programs, Food Drives, and Multi Cultural events within our community. The commission is also available at events such as Somerdale Day, and Night Out to talk with residents and help to strengthen relationships within our community.

**If you are interested in serving on the Commission
please fill out the form below and send to:**

Somerdale Borough Hall

105 Kennedy Boulevard, Somerdale, NJ 08083

Att: Councilman Larry Sefchick

Name _____

Address _____

HomePhone _____ Cell _____

E-Mail _____

Borough Contacts

Hours: Monday – Thursday 8:00 am to 5:15 pm

Court Sessions – please call for exact date & time

Municipal Clerk	856 783-6320 x 3300
Council	856 783-6320 x 3300
Construction Office	856 783-4629 x 1500
Finance Officer	856 783-6320 x 1600
Fire Prevention Bureau	856 783-6320 x 2100
Mayor's Office	856 783-6320 x 1700
Municipal Court	856 783 0958 x 2200
Nuisance Officer	856 783-6320 x 2100
Police Department Records	856 428-6320 x 2500
Public Works	856 783-4648
Tax Assessor	856 783-6320 x 1400
Tax Collector	856 783-6320 x 1900
Vital Statistics	856 783-6320 x 1300 or x 3300
Zoning Officer	856 783-6320 x 1100

Regular Meetings:

*Council Work Session - Select Tuesdays at 6PM (if needed)

Caucus - 2nd Wednesday of the month, 6PM

Council - 2nd Wednesday of the month, 7:30PM

*Planning/Zoning Board - Last Wednesday of the month, 7PM

**May be cancelled due to lack of agenda.
Check our website for meeting notices and further details.*

MAYOR AND COUNCIL

Mayor Gary J. Passanante

gpassanante@somerdale-nj.com

Council President David Alexander

dalexander@somerdale-nj.com

Councilman George C. Ehrmann

gehrmann@somerdale-nj.com

Councilman Larry Sefchick

lsefchick@somerdale-nj.com

Councilman Edward Kain

ekain@somerdale-nj.com

Councilman George Badey

gbadey@somerdale-nj.com

Councilman James Perry

jperry@somerdale-nj.com

SOMERDALE



Baseball & Softball

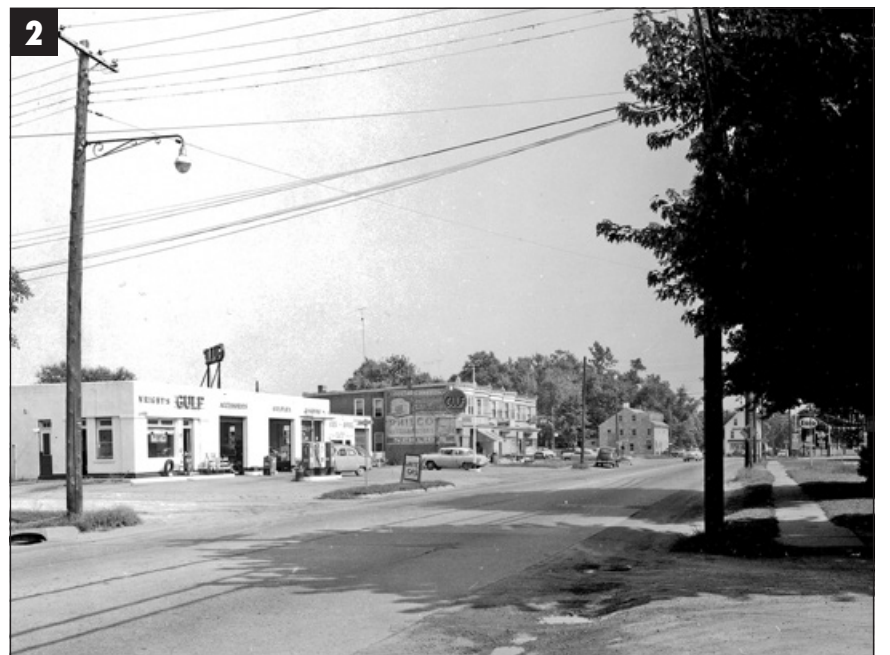
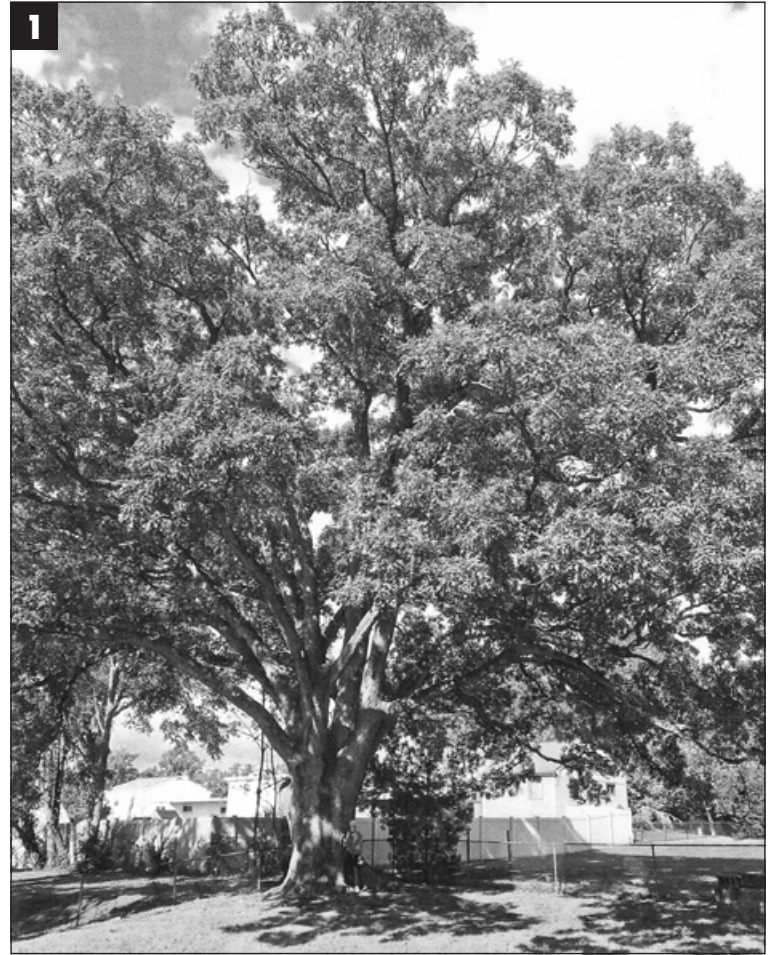
Somerdale Baseball and Softball spring registration is now open. Please go to our website and register your child or children for baseball, softball and/or t-ball. We are going to have a uniform fitting in February, so please register as soon as possible. If you have any questions, please contact SBSA President Chip Reitano at sports-fan2200@msn.com or 267-872-0469

THANK YOU AND BE SAFE!!!

- SBSA BOARD OF DIRECTORS

LEAGUELINEUP.COM/SBSA

Somerdale Historical Society Pictures From The Past



FOOD FOR SOMERDALE

Somerdale is very fortunate to have four food pantries that operate within our community. There are many wonderful volunteers who donate their time and energy to staff the food pantries so that residents in our community never go hungry. If you or anyone you know is in need of assistance please contact any of these locations.

Somerdale VFW

10 Kennedy Blvd, Somerdale, NJ 08083

Phone: 1-800-931-3371

Hours: Every Tuesday 1:00 pm to 1:30 pm

Our Lady of Guadalupe - St. Vincent de Paul Society

13 E. Evergreen Avenue, Somerdale, NJ 08083

Phone: 856-627-8824

Hours: 2nd and 4th Saturday of every month 12:00 pm to 2:00 pm

Lion of Judah Church

9 Odlen Ave, Somerdale, NJ 08083

Phone: 856-346-2636

Hours: Every 3rd Saturday of every month 10:00 am to 12:00 pm

Park Ave. Community Church Food Pantry

451 Hilltop Ave, Somerdale, NJ 08083

Phone: 856-435-0309 (call for information)

Hours: Every Thursday 1:00 to 3:30

PHOTO 1: Oldest Tree In Somerdale - It is always our pleasure to share with our residents anything in our community that holds historical significance. There is a tree approximately 300 years old located on Glenwood Avenue here in Somerdale. It is approximately 79 feet high with a spread of 85 feet wide, and a trunk measuring 189 inches in circumference. This tree is considered a Signature Tree by the American National Forest Service. It is the 2nd largest White Oak reported in Camden County and 16th largest reported in the state. Trees of this caliber are rare and should be maintained and protected. Trees of this size are mega resources and perform 600 times the environmental benefits of typical trees. To put this trees age in perspective, it was probably planted about 50 years prior to the signing of the Declaration Of Independence.

PHOTO 2: This picture, taken around 1959, shows the White Horse Pike as a two lane highway. The middle of the photo shows the infamous White Horse Tavern which was built around 1750 and was taken apart piece by piece to preserve in 1966. To the left of the Tavern stands The Little Spot Bar which is still in the same location today.



THE MAYOR'S CORNER

2021 Somerdale State of the Borough Address | January 6, 2021

As I sat pondering what I would say in this year's State of the Borough Address, the first thoughts that came to mind were "good riddings 2020!", "we made it!", "what's next?" "the Presidential election is over... I think!" and "what will our future look like?"

I can't begin to express how challenging 2020 has been for those in public positions entrusted to provide safety, stability, services and guidance to our constituents.

Our heroes on the front lines (EMS, Police, Fire and Public Works) were faced with unprecedented circumstances for a local government and they proved that they were up to the task and committed to their responsibilities.

Our Governing Body took immediate steps to provide relief and support for our local residents and businesses. A Shop Somerdale Merchant Gift Card was introduced that saved residents 25% on local goods and services, encouraging them to support our local participating merchants. First quarter 2020 tax deadlines were extended (without penalty) to assist those out of work. Preventative operational measures were immediately implemented. Work crews were divided so that services would not be totally impacted in the chance that any employees might contract the disease.

I am very proud of the work performed by our first responders, our administrative staff and professionals. They continue to serve in adverse conditions and with very little impact to the great service you have grown accustomed to as a resident of our community. Our schools, teachers and students were faced with enormous challenges to implement remote learning overnight but they responded and worked through a very difficult academic year.

I would be remiss if I did not reflect on the tragic loss of hundreds of thousands of Americans and the toll this pandemic has taken on our citizens, small businesses and economy. While 2020 may be over, we are still in for the fight of our lives. I urge each and every one of you to continue practicing social distancing, wear face coverings and follow the recommendations of the CDC. Support our local businesses and never lose hope. Together, we will win this war but it will take our full cooperation as family, friends and residents of our community.

Finally, I urge everyone to get vaccinated when it becomes available in the near future. I understand and appreciate those who are concerned about the safety aspects of a new vaccine. We all wish to return to a more normal life i.e., the "pre-COVID-19 days" but without the inoculation of the majority of our population, we will not rid ourselves of this pandemic. I continue to participate in bi-weekly conference calls with state and county officials regarding the current conditions throughout the state and the roll-out plans for the vaccine. We have

links on our website and Facebook page where you can obtain the latest information from the county, state and CDC as well. Stay informed and please follow the guidelines for the safety of you and those around you.

Now onto some happier topics. Tonight, we celebrate the return of two council members, Councilman James Perry and Councilman Larry Sefchick who have served the residents of Somerdale well for many years. Both have been active in community services and the continued growth of our municipality. As always, I look forward to our continued work together, making Somerdale the best it can be! Councilman Perry will be continuing his efforts with beautification and our buildings and grounds. Councilman Sefchick is spearheading a new Historical Society initiative that began with his work on the 90th Anniversary. I look forward to their efforts and am sure they will continue to enhance life in our community.

While it feels like we lost a year of our lives, Somerdale still made some strides in 2020 despite the pandemic. For the 9th year in a row, Somerdale's "Net Property Values" experienced a significant increase. For 2020, our net valuation rose another \$3.25 million dollars as a direct result of our continued economic development. Our overall tax rate increased less than 1%, less than half of the state average cap.

I am also very happy to report that we accomplished many of my 2020 objectives. Unfortunately, due to COVID, several initiatives were stalled with plans to revisit them in 2021. Here are some of our successes in 2020:

- The grand opening of Armageddon Brewery, one of the first Cider & Meade breweries in the state of New Jersey
- The creation of a new "historical society" which will continue the preservation work begun in 2019 as part of our 90th anniversary celebration
- We implemented automated "in-house" trash collection to supplement our current recycling efforts and converted our current recycling to an automated process. This alone was a major task in light of the pandemic, but our Department of Public Works, led by Superintendent Greg Ruggieri did an outstanding job transitioning to the in-house service and implementing a new collection schedule.
- We completed street renovations on Farndale, Hilltop, several blocks of Ava and Gloucester, Osage and most of Crestwood Avenue.
- We expanded our Social Media presence by providing online media coverage of several events, and highlighted several local businesses. This would

have been more encompassing but many of our major events were cancelled due to the pandemic.

I expect 2021 to be a very challenging budget year as revenues from 2020 were down (as expected) and costs were up despite receiving some CARES funding to help compensate for the unanticipated costs of the pandemic. With that said, I am proposing a relatively conservative agenda as I see 2021 as our "recovery" period. However, I do anticipate some progress on several significant fronts. Some of these are as follows:

- The delayed opening of Phase 1 of The Reserve at Grace this spring with the continued construction of the two new mixed-use buildings by year end.
- Ground breaking of the new LIDL supermarket on the White Horse Pike
- Street improvements to Dartmouth Ave., the balance of Crestwood Avenue and Evergreen Avenue
- Additional educational videos and business highlight videos as well as the return of our annual events (assuming COVID-19 is under control)
- Revisiting the 2020 parks and recreation initiatives

In closing, I would like to recognize all of the departments, the administration, council, my borough clerk, our boards and committee members and the many volunteers for their efforts throughout the past year. Somerdale is blessed with some of the finest professionals and staff who work tirelessly behind the scenes for the benefit of you, our residents. No better example of that was apparent after the challenges and their performance in 2020!

As always, I would like to thank my wife Jeanne and my sons, Steven and Tyler, for their continued support and understanding as I spend much of my waking (and sometime sleeping) hours serving our community. Finally, I would like to thank you, our residents and business owners, for the faith and support of your local government.

I wish you all a very Happy New Year and look forward to a more normal year to come.

**God bless you,
our community and God Bless America.**

Gary J. Passanante

SOMERDALE FIRE DEPARTMENT



The Officers and Members of the Somerdale Fire Department wish everyone a happy healthy 2021.

As we begin the New Year, the Somerdale Fire Department is ready to serve, as always. Last year, our volunteers responded to 414 calls for emergency service, conducted over 1825 hours for training. We have been able to resume in person training provided that we use prescribed precautions. Additionally, we have been able to resume driver training, with members needing to meet a required amount of hours and skill set to drive to emergencies.

While 2020 will stand out all on its own due to the COVID-19 Pandemic, last year the fire department became resourceful and had to think out of the box for training, and online courses were developed, distributed to the membership for completion. Members responded to over 75 calls for service in a 24 hour period due to a storm that knocked power out for days in some sections of town. In May of 2020, we lost a member of over 70 years, Danny Stetser. He served both his community and the USMC with distinction. Our Easter Flower sale had to be cancelled, so our members met the challenge and came

up with the idea to escort the Easter Bunny through town. In November, we responded to Waterford Township for a large fire that required large amounts of water. Engine 65, was on location and pumping water for over 22 hours. We worked to rotate crews, for a non-stop operation. Somerdale firefighters are proud to be able to continue our tradition of escorting Santa around on Christmas Eve, albeit a little different than in the past. We are looking forward to be able to be out, and handing out candy canes Christmas Eve 2021.

The Somerdale Fire Department would like to thank everyone that supported our annual Fund Drive; your contributions are greatly appreciated. We are a registered non-profit (501C-3) organization, along with being 100% volunteer; we have been hampered with our fundraising efforts last year, as everyone has been affected. Plans are underway to be able to conduct our annual Easter Flower Sale and the annual Smoked BBQ sale. Please watch for future fund raisers and events.

****AMERICAN RED CROSS BLOOD DRIVE****

Wednesday February 24th, 2pm -7pm

101 Park Ave, Somerdale

Sign up at www.redcrossblood.org and use the sponsor code Somerdale fd

As a volunteer organization, we are always accepting applications. We have positions in firefighting, fire police (traffic control), junior firefighters (16-17 year olds) and associate members. Stop by the firehouse on a Monday night if you are interested.

Please follow us on Facebook --- and visit our website at www.somerdaledfire.com

FROM THE DESK OF POLICE CHIEF JAMES WALSH

Somerdale to participate in Safety Audit and Street-Smart Campaign

The Borough of Somerdale and the Somerdale Police Department will participate in a Strategic Highway Safety Audit and StreetSmart Campaign. Initially we wanted to reassess the crosswalk at the of White Horse Pike and Hartner Avenue as this is in the area of a residential neighborhood and directly across from strip stores – which creates a desire line, and pedestrians will cross there whether or not a crosswalk is present; it's the most direct and shortest distance, despite the inherent dangers of crossing a four-lane road.

Our concern is that we believe the crosswalk should be "controlled" with a traffic beacon or device to draw attention to the crosswalk and improve safety by allowing pedestrians to cross more safely. We need an effective solution/improvement without a redesign of the roadway. The StreetSmart campaign is great for raising awareness and educating both drivers and pedestrians, though I believe it's most effective when paired with roadway improvements and community involvement that comes with the Strategic Highway Safety Audit.

As a result of our first meeting – we decided that the Strategic Highway Safety Audit will be of the entire town, with suggestions for improvements based on observations, Somerdale's Master Plan, NJ Future & Aging Study, motor vehicle crash data and community input/involvement.

The following agencies are assisting us free of charge: NJ Office of Safe Streets – Delaware Valley Regional Planning Commission, Cross County Connections, Substantial Jersey and the NJ Transportation Planning Authority.

The StreetSmart Campaign will be geared for the Spring to allow us time to sort and gather data, etc.

- we will have photos/videos/drone footage taken to assist in formulating the plan and to be used in public safety announcements, print ads/posters and during educational sessions at Somerdale Park School and Sterling Regional High School.



One of the intersections under review (White Horse Pike & Hartner Avenue, Somerdale)

How can residents assist?

We would like citizen volunteers to help us to stage photos similar to the ones in the below link – this way the photos will be **Somerdale residents at Somerdale locations**, rather than using stock photos of random intersections and people. If anyone is willing to volunteer - either with staging photos or attending meetings (most likely ZOOM Meetings – due to COVID-19) please contact me at jwalsh@somerdale-nj.com or call (856) 428-6324 ext. 2500. We want to include the community and value their input with this worthwhile safety campaign!

If you follow this link, you will see an example of what our traffic safety partners have completed so far:

<https://youtu.be/J6KYxcXVTpc>

These Public Safety Announcements (PSA's) and Posters will be customized for Somerdale and either handed out in brochure form or posted throughout the community:



STREET SMART

www.beststreetsmartnj.org



POLICE CHIEF JAMES WALSH

As always – if anyone has any questions or concerns, please feel free to contact me!
Thank you!

Be ready for any **emergency**

Brought to you by the Camden County Board of Freeholders

camden county

Making It Better, Together.

Smart911 | Plan ahead to protect your loved ones

The Camden County Board of Freeholders is proud to announce the state's first county-wide **Smart911** system. The program will save critical time in emergency situations by providing vital information to emergency dispatchers and first responders.

Camden County residents are encouraged to create their free safety profile with Smart911 to have their information available to dispatchers and to receive emergency notifications. Smart911 is private and secure, and is only used for emergency responses, and only made available to the 9-1-1 system in the event of an emergency call.



Smart911™

Learn more and **create your safety profile at camdencounty.com**





Physical Therapy Health & Fitness



Kevin L. Laser,
P.T., C.K.T.P.



Jennifer L. Laser,
M.S.P.T., C.K.T.P.



State-of-the-Art Fitness Center Offering:

- ▶ General Gym Memberships
- ▶ **FREE** Fitness & Nutrition Assessments
- ▶ Personalized fitness programs by a licensed Physical Therapist
- ▶ **FREE 1-Month Trial Gym Membership**
 - * If you join within the trial period, get 50% off a 1-year gym membership or 10% off a 3 or 6-month membership
 - *** New Members Only

700 S. White Horse Pike
Somerdale, NJ 08083
(856) 504-6930
www.FastTrackPTnj.com

PHYSICAL THERAPY SERVICES:

- Orthopedics & Sports Injuries
- Return to Sport(s) Training
- Total Joint Replacements
- Neck & Back Injuries
- Arthritis & Osteoporosis
- Vertigo/Dizziness
- Balance & Gait Disorders
- TMJ Dysfunction
- Pre-/Post-Concussion Programs
- Worker's Comp & Auto Injuries

Fast Track is proud to offer
ADVOCARE Products.

With the safest products for weight management, energy, performance, and overall wellness, there is something for everyone!

Stop in for your
FREE sample of Spark
(energy/mental focus drink)
and to find out more about
these safe and effective
products.
Why not you!!!

ADVOCARE | Independent Distributor
www.advocare.com/15015835



www.sandovalgraphics.com

435-7320

printing@sandovalgraphics.com

9 Minnetonka Road • Hi-Nella, NJ 08083-2718



PRINTING COPIES • SIGNS POSTERS • BANNER VEHICLE LETTERING

AD BOOKS • ANNUAL REPORTS • BANNERS
BROCHURES • BUSINESS CARDS • CALENDARS
CATALOGS • DIRECT MAILER'S • ENVELOPES
FLYERS • INVITATIONS • INVOICES
LETTERHEADS • MEDIA ADS • MENUS
NCR FORMS • NEWSLETTERS • POSTCARDS
POSTERS • PRESENTATION FOLDERS
PROPOSALS • RAFFLE TICKETS • YARD SIGNS

...and More!



We **CUSTOM DECORATE**
APPAREL • EMBROIDERY
SILK SCREENING • VINYL APPLIQUE

Vaccine Roll Out Information

Updated: January 8, 2021



Making It Better, Together.

Vaccine Distribution Phase 1 (Currently In Progress)

Category 1A (Limited Vaccines) - Persons in Health Care Settings

Vaccination is occurring now

- Persons working in health settings with direct or indirect exposure to patients or infectious materials, paid or unpaid.
- Long Term Care Residents and Staff of:
 - Hospitals
 - Home Care Workers
 - Dialysis Centers
 - Long Term Care Facilities
 - Firefighters
 - Law Enforcement
 - Urgent Care Clinics
 - Dental Offices
 - Pharmacies
 - Funeral Homes
 - Public Health Offices
 - Group Homes
 - EMS Workers

Category 1B (When Vaccine Expands) - Essential Workers

Vaccination will begin tentatively on 1/27/21

- First Responders
- Energy
- Education/Childcare
- Government
- People aged 75 years and older
- Food and Agriculture
- Water Sanitation
- Transportation

Category 1C (Next Vaccine Expansion)

Vaccination will begin tentatively on 2/20/21

- Adults 65 and over
- Adults with underlying medical conditions or immunocompromised

Vaccine Distribution Phase 2 (Vaccination Expected to Begin First week of March)

- Remainder of Phase 1
 - Persons in Health Care Settings
 - Essential Workers
- Critical Populations:
 - Incarcerated
 - Homeless Shelters
 - Psychiatric Facilities
 - Communities That Have Been Disproportionately Affected
 - Colleges/Universities
 - People with Disabilities
 - Group Homes
 - Other Congregate Settings
 - Tribal Communities
 - People Who Are Under or Uninsured
 - Rural Communities

Three Ways to Avoid COVID-19 Vaccine Scams

While vaccination details are getting worked out, here's what you can be sure of:

- You can't pay to put your name on a list to get the vaccine. **That's a scam.**
- You can't pay to get early access to the vaccine. **That's a scam.**
- Nobody legit will call about the vaccine and ask for your Social Security, bank account, or credit card number. **That's a scam.**

Ignore any vaccine offers that say different, or ask for personal or financial information.

Learn more at

ftc.gov/coronavirus/scams



Recycling Contamination

Occurs when the wrong items, or the right items prepared the wrong way, are placed in curbside recycling bins

#RecycleRightNJ



SOMERDALE TIME CAPSULE 2019 – 2079



Pictured from left to right: Councilman Larry Sefchick, Mayor Gary Passanante, Council President Dave Alexander and Councilman George Badey



Dr. Susan Trager from Somerdale Family Dental holding their contribution to the time capsule
(Photo Credit: Somerdale Family Dental)



Pictured from left to right: Dr. Fran Rebhun from Somerdale Family Dental, Borough Clerk Michele Miller, Mayor Passanante and Dr. Susan Trager from Somerdale Family Dental
(Photo Credit: Somerdale Family Dental)



Well, it has already been over a year since we had the ceremony for our Somerdale Time Capsule. We would like to share some details about what has taken place since the ceremony. In 2019, Somerdale celebrated it's 90th year as a Borough. It was then we decided to bury a time capsule so our future residents could see a glimpse of what we were like today. The capsule is full of details about our history, residents, businesses, teachers, students, events, heritage, technology, and government. We took great care in making sure we would preserve the contents of the capsule by protecting each article with a protective covering

and cataloging each and every item. Our friends at Pepco Manufacturing designed, built, and donated a sealed stainless container to hold all of the delicate contents.

Our Public Works Department did an amazing job in the final stages of the capsule burial. Rob Shaw designed and built the concrete vault in which the stainless-steel capsule would be kept. Our Public Works guys were extremely careful in every step of the way, excavating the hole, lifting the vault, and placing the time capsule into the vault. (Not surprised, the whole process went off without a hitch).

Once the vault lid was on it was sealed with cement to protect from the elements. When the dirt and the grass were replaced a granite stone and a bronze plaque were put in place to commemorate the time capsule.

The time capsule will be in the ground until 2079 which is a very long time. We encourage all parents to visit the time capsule at Borough Hall on Kennedy Blvd. with your children and explain to them what a time capsule is and why we bury them. After all, a 7-year-old child today will be 65 years old in 2079. We are counting on them to be the "Guardians of The Capsule," to ensure

its historical value and to make sure a little part of Somerdale's history always remains relevant.

We have registered our time capsule as: Somerdale Historical Preservation, with the International Time Capsule Society. You can view online at: www.Notforgotton.com

A sincere thank you to everyone who participated and supported The Time Capsule Project.

**The Somerdale 90th Committee
The Somerdale Historical Society**

General Vaccine Safety



GENERAL VACCINE SAFETY

Vaccines are safe and effective. Because vaccines are given to millions of healthy people — including children — to prevent serious diseases, they are held to very high safety standards.

How are vaccines tested for safety?

Every licensed and recommended vaccine goes through years of safety testing including:

Testing and evaluation of the vaccine before it is licensed by the Food and Drug Administration (FDA) and recommended for use by the Centers for Disease Control and Prevention (CDC)

Monitoring the vaccine's safety after it is recommended for infants, children, or adults

Vaccines are tested before they are recommended for use

Before a vaccine is ever recommended for use, it is tested in labs. This process can take several years. FDA uses the information from these tests to decide whether to test the vaccine with people.

During a clinical trial, a vaccine is tested on people who volunteer to get vaccinated. Clinical trials start with 20 to 100 volunteers, but eventually include thousands of volunteers. These tests take several years and answer important questions like:

Is the vaccine safe? • What dose (amount) works best? • How does the immune system react to it?

Throughout the process, FDA works closely with the company producing the vaccine to evaluate the vaccine's safety and effectiveness. All safety concerns must be addressed before FDA licenses a vaccine.

Every batch of vaccines is tested for quality and safety

Once a vaccine is approved, it continues to be tested. The company that makes the vaccine tests batches to make sure the vaccine is:

- Potent (It works like it's supposed to)
- Pure (Certain ingredients used during production have been removed)
- Sterile (It doesn't have any outside germs)

FDA reviews the results of these tests and inspects the factories where the vaccine is made. This helps make sure the vaccines meet standards for both quality and safety.

Vaccines are monitored after they are recommended to the public

Once a vaccine is licensed and recommended for use, FDA, CDC, and other federal agencies continue to monitor its safety.

There are many different parts of the national vaccine monitoring system

The United States has one of the most advanced systems in the world for tracking vaccine safety. The VAERS is just one of the systems that supplies data for researchers to analyze. Visit www.vaccines.gov for a full list of vaccine monitoring systems. Together, they help provide a full picture of vaccine safety.

• **Vaccine Adverse Events Reporting System (VAERS):** VAERS is an early warning system managed by CDC and others can use VAERS to report side effects that happen after a patient received a vaccine. Some side effects might be related to vaccination while others might be a coincidence (happen by chance). VAERS helps track unusual or unexpected patterns of reporting that could mean there is a possible vaccine safety issue that needs further evaluation.

General vaccine safety information visit: www.vaccines.gov

New Jersey's COVID-19 Vaccination Plan:

https://www.state.nj.us/health/cd/topics/covid2019_vaccination.shtml

COVID-19 updates: www.camdencounty.com

Camden County COVID-19 Response

Since the start of the pandemic and through the summer, Camden County residents have faced unprecedented threats to their health and economic security due to the COVID-19 pandemic. Throughout this crisis, the Camden County Freeholder Board has continuously sought opportunities to support the community and to lessen the burden on individuals, families, and businesses.

Freeholder Director Louis Cappelli Jr. talked about the necessity of a flexible response when dealing with an ever-changing crisis.

"This kind of emergency demands constant attention, as the needs of our community have changed rapidly from one month to the next," Cappelli said. "In the spring, our administration worked day and night to secure scarce materials like coronavirus tests, personal protective equipment, and masks. By the summer, cases were decreasing, but the economic fallout of public health measures meant we needed to ensure that businesses, hospitals, and municipalities received the millions of dollars of support they needed. We are still actively monitoring each development, and we are ready to act."

Initiatives at the county-level have led to a series of actions in the interest of public health and welfare, including:

- The Department of Health has administered thousands of vaccinations as part of the 2020 Flu Shot Program which for the first time features drive-thru vaccination sites.

- More than 5,500 families have been supported via 23 drive-thru food distributions hosted throughout the county.

- More than 345,000 home-delivered meals have been distributed since the pandemic began.

- \$25 million in CARES Act funding is being dedicated and provided to small businesses throughout the county.

- \$3.2 million in CARES Act funding has been allocated to municipalities that applied for it.

- \$28.7 million in CARES Act funding has been allocated to our three major healthcare providers.

- \$4 million in CARES Act funding is being allocated to support renters whose income has been impacted by the pandemic.

- Developing and implementing a robust contact tracing operation of more than 60 employees who are working in the county Health Department to identify COVID contacts and limit community spread.

- Continued virtual operation of the county library system for kids, families and seniors, while opening indoor facilities with safety procedures in place.

- Both the Camden County Health Department and Camden County Police Department have given out more than 100,000 masks to residents.

- The Board has tested approximately 7,000 residents, first responders and front-line workers in county-run sites prior to the private sector and nonprofits expanding testing.

- The county worked with Cooper University Health Care, Virtua Health and Jefferson Health in New Jersey to construct and operate four separate COVID testing sites.

- The county strategically placed portable washing stations outdoors to provide options for good hand hygiene for those who lack access.

- Ten wholesale food distributions have been executed since the start of the pandemic feeding more than 2,750 families throughout the county.

- With a lack of cooling centers, over 300 fans and more than 200 air conditioners have been distributed to seniors and disabled residents to keep them in their homes.

- More than 4,000 hand sanitizer units have been given out to residents.

- More than 500,000 pieces of personal protective equipment has been issued to local first responders.

- More than 750,000 units of personal protective equipment has been provided to the county's 56 long-term care facilities and assisted living centers.

- The county Department of Public Safety has purchased and provided UV decontamination devices to strategic locations throughout the county to ensure critical vehicles and facilities are clean.

- Building strong operational partnerships with Cooper University Health Care, Virtua Health and Jefferson Health in New Jersey.

- Providing tools, educational materials and masks to Cathedral Kitchen in Camden City.

This is just a sampling of the measures taken to protect and support the community, as Camden County has instituted countless additional actions to keep residents safe and secure during this crisis. Planning is already underway for numerous scenarios that may arise in the future, including new testing sites in the event of a second surge, and administration procedures to be used if and when a COVID-19 vaccine becomes available.

Freeholder Jonathan Young highlighted the continued work of county employees who have responded throughout the pandemic.

"Behind the scenes, there is a team of people working with our seniors to keep them safe, working with businesses to keep them open, and working with residents to keep them afloat. These folks have been working nonstop for seven months, and we owe them a tremendous debt of gratitude," Young said. "These men and women have responded and reacted to every changing situation and every new challenge. I am confident that we will emerge stronger from this pandemic because we have a team that is dedicated to making it happen."

The CARES Act was a trillion-dollar economic relief package to protect the American people from the public health and economic impacts of COVID-19. The law was signed into law in late March, having been passed by Congress with overwhelming, bipartisan support. Congressman Donald Norcross worked with his colleagues in the House of Representatives to pass the Coronavirus Aid, Relief, and Economic Security (CARES) Act.

"It has been eight months since the coronavirus pandemic hit South Jersey, and we are still in the midst of both a public health crisis and an economic crisis," Norcross said. "While no one could have predicted what would unfold this year, I commend Camden County for their responsiveness and innovation during these uncertain times to get resources to those in our community who need it most. I'll continue to fight in Congress to ensure South Jersey gets the relief needed to combat this outbreak and keep our neighbors healthy and secure."

BULK TRASH COLLECTION INFORMATION

EAST SIDE - 1ST & 3RD FRIDAYWEST SIDE 2ND & 4TH FRIDAY

- Bulk items will be collected on the assigned Fridays, East or West Side of town – **remember-** if it's you recycle week, it's your bulk week
- You **MUST** call 856-783-6320 X-4600 to schedule your pick-up
- You **MUST** call at least 24-hours prior to your scheduled collection day to be on that week's schedule. No additional items will be added to the list on the bulk collection day, those items will be added to the next scheduled collection.
- You must provide the items to be collected, chair, mattress, carpet, Etc. only the items requested and listed will be collected. *(Please follow rules for disposal or the items will not be collected)*
- If you **do not** notify the DPW with the bulk item(s), the item(s) **WILL NOT BE COLLECTED** until you call and get on the bulk collection schedule.
- Waste resulting from dwellings under renovation is the responsibility of the individual or contractor performing the work to have it removed. *(acquire a dumpster from a private hauler)*
- When moving and/or clearing out the contents of a dwelling, you will need to acquire a dumpster from a private hauler to have the contents of the dwelling removed.

DEFINITION OF BULK TRASH –



Wood fence cut into (MAX) 3-ft sections; nails & screws removed!!

Bulk items consist of household items that do not fit in your blue cart, such as furniture, mattresses and/or box springs, carpet & padding (cut, rolled, & taped in 3ft lengths), wood fence cut into maximum 3-ft sections with all nails/screws removed. Bulk trash **CANNOT** contain hazardous materials, electronics, construction and/or remodeling debris.

Please keep in mind that Somerdale's bulk trash collection is NOT for the purpose of discarding materials from demolition and construction projects or household trash. The intended purpose is to assist residents in removing normal bulky household items such as furniture, mattresses, wood materials, and other large items that are too big to fit in the trash carts. Items should be placed curbside the night before collection, never more the 24 hours prior to collection.

SPRING LEAF COLLECTION IN APRIL

Please follow these rules for spring leaf collection



April is Spring Clean-up month. Please rake all leaves loose to the curb and do not bag leaves during the spring collection, curbside pick-up is more cost effective for our community!

Rake pile between sidewalk and curb

Only leaves are accepted

Do not place leaves in street

Do not cover storm inlets with leaves

Sticks & branches, bricks, pet waste,

Do not park in front of or on leaf pile

toys, trash, recyclables, trash bags,

Rake pile into a long narrow strip along

plants, vines, wood or any other

curb line and not into a mounded pile

material other than leaves. These items will damage our equipment.



Spring Clean-Up Keep out of the leaf pile

The leaf machine will be out a minimum of once a week during the April clean-up event. Spring curbside collection will end on the last Friday of April.



At the end of April - the leaf machine will not be out until fall leaf collection.

Please place all leaves in open containers not to exceed 32 gallon in size or paper biodegradable bags on the appropriate yard/vegetative waste collection day (Monday)

****NEVER use plastic bags, they will not be collected!!!**

Diverse Books and Graphic Novels Waiting for 8th Grade Students to Return

Donors Choose Makes This Happen in Mrs. Ratajski's 8th Grade Classroom



Our New Titles Have Hit the Shelves and Are Just Waiting for 8th Grade

Working Hard to Add New Books Despite Remote Learning

Our classroom library is alive and waiting for the eighth-grade students to return. Mrs. Ratajski wrote a Donors Choose project called We Can Do Better, Be Better, Live Better. The purpose of this project was to add new titles that would reflect the students in our class. The project asked for graphic novels and new titles to add to the independent reading portion of the ELA classroom.

What is Donors Choose?

Donors Choose is a nonprofit organization that allows individuals to donate directly to public school classroom projects. Founded in 2000 by former public-school teacher Charles Best, Donors Choose was among the first civic crowdfunding platforms of its kind. Every year, 94% of teachers spend their own money on school supplies for their students. You can help change that on **DonorsChoose.org** through donating to a project or presenting a local teacher with a gift certificate to help fund a future project.

At Somerdale Park School, Mrs. Ratajski's most recent project has provided more diverse titles and new graphic novels for her students. Family, friends, parents, former parents and other teachers have donated to this reading project. Perfect strangers, who value the written word have also supported the project.

Why graphic novels, you ask? By offering graphic novels, students will encounter more "rare" vocabulary words that will support their learning across the curriculum. Many of the new titles deal with civil rights, which supports the newest class novel, The Watsons Go to Birmingham, 1963.

My Students

Encouraging student to read has been a challenge during remote learning. Every teachable moment to "pitch a book" is a valuable chance to hook a student. Building true reading behaviors comes from being consistent and demonstrating how important reading is. Encouraging students to read for pleasure occurs when students feel comfortable and discover their personal learning style. Just like choosing from a menu, graphic novels and interest driven books will become a first choice in the grade ELA classroom, when the students return.

Providing ample book choice is paramount. Our students depend on the classroom library for their book selection. Offering as many genres as possible enhances the daily reading experience. Now that graphic novels are the number one choice, new titles are just what we need to keep the excitement going!

The Recent Project

Graphic novels are being used as inspiration for kids at any grade level to express themselves. The format serves as a teaching tool to introduce such literary elements as flashback, symbolism, or foreshadowing, and other aspects of effective writing, like dialogue. Graphic novels can also challenge students to think deeply about the elements of storytelling. In a traditional text, students uncover meaning embedded in sentences and paragraphs. In graphic texts, students must analyze the images, looking for signs of character development, for example, or clues that help build plot.

Graphic novels appeal even to the most struggling reader. Many students shy away from novels because the number of pages is daunting... graphic novels provide ample opportunities for students to experience subject matter that they never have attempted to tackle. Check out **www.donorschoose.org** a place where dreaming big happens!



2021 PET LICENSES ARE NOW AVAILABLE

Dear Pet Owner:

Below, please find the form to license your pet for 2021, submit one copy per pet along with the associated fees. If you would like to return the completed form with the correct fee & a self addressed stamped envelope, we will mail your license and tag. If you do not include a self addressed stamped envelope, your license will be available for pick up. You may also drop off your information at borough hall in the dropbox located in the vestibule.

The license fees are:

- Dog (spayed/neutered) - **\$10.00**
- Dog (not spayed/not neutered) - **\$21.00**
- Cat (spayed/neutered) - **\$10.00**
- Cat (not spayed/not neutered) - **\$21.00**
- Late Fee – effective 6/1/2021 - **\$25.00 additional per animal**

THE RABIES VACCINATION MUST NOT EXPIRE BEFORE OCTOBER 31st, 2021. If it does, you must provide new rabies certification or your animal will not be licensed.

Sincerely,
Michele Miller, RMC / Municipal Clerk

LICENSE FORM

Owner's Name _____

Address _____

Phone # _____

Please Circle One: Dog Cat

Pet's Name _____

Breed _____

Color _____ Date of Birth _____

Age _____ Sex _____

Spayed/Neutered By _____

Date _____ (Must provide proof of spay/neuter)

Rabies Vaccination Expiration Date _____

(We must see the certificate)

2021 RABIES CLINIC

Due to the pandemic and social distancing restrictions, our annual Rabies Clinic will look a little different in 2021. We will be holding a drive thru rabies clinic in May (date to be determined). Please keep an eye out for more details in our April edition of the Somerdale Voice. Until then, late fee deadlines will be extended to take effect on June 1st.

***Should you have any questions
regarding the clinic, or obtaining
a license for your pet, please
call (856) 783-6320 ext. 3300 or 1300.***

KIMBERLY A. WILSON, Esq.

Specializing in Chapter 7 & 13 bankruptcy,
loan modifications, real estate,
municipal court, wills, POA'S & estates.

**24 N. White Horse Pike
Somerdale, NJ 08083**

856-783-4440

k_wilsonlaw@comcast.net



MEMBERS NEEDED / JOIN TODAY SOMERDALE EMERGENCY MANAGEMENT

The Somerdale Office of Emergency Management exists to serve the emergency needs of the community whether it is a natural disaster, major storm system, long-term power outages, chemical or hazardous material incident or terrorist threat.

For more information contact John O'Leary
Somerdale Emergency Management Coordinator at
em31652@aol.com or 609-790-9038

**NEW
LOCATION!****Floss' Grooming**

located at 222 S. White Horse Pike, Stratford 08084

THIS COUPON ENTITLES HOLDER TO

\$5.00 OFF**FOR NEW CUSTOMERS**1 coupon per customer. Not valid with any other offers.

CALL AND BOOK AN APPOINTMENT TODAY!
(856) 441-3099

BJ HARRISON & COMPANY, LLC CERTIFIED PUBLIC ACCOUNTANT

- Tax Preparation Services for Individuals, Businesses, Estates & Trusts
- Bookkeeping & Accounting Services
- IRS & State Tax Representation

*Licensed in New Jersey and Pennsylvania***Betty Jane Harrison-Marshall, CPA**

phone: 856.258.5899 -OR- 856.546.4600
 email: bj@harrisoncpa.com | fax: 866.865.4608
 24 N. White Horse Pike | Somerdale, NJ 08083

ABC TENDER HEARTS XYZ
PRESCHOOL & DAYCARE
 107 PARK AVE • SOMERDALE, NJ 08083
856 435 3121



**"Developing creative minds
and growing tender hearts!"**

Individual Teacher/Student Attention
 State Licensed to Teach
 2 1/2 Years Old to Preschool Age
 Loving & Friendly Atmosphere
 Flexible Days & Hours



COVID-19 INFORMATION

The Camden County Board of Commissioners, in a joint public health effort with Cooper University Health Care and Jefferson Health – New Jersey, will begin vaccinating individuals at the Camden County Vaccination Center located at Camden County College – Blackwood Campus. On-line scheduling is available now.

PLEASE NOTE: YOU MUST SCHEDULE AN APPOINTMENT ONLINE.

REVIEW ALL INFORMATION BELOW BEFORE YOU SCHEDULE.

The New Jersey Department of Health, following Centers for Disease Control and Prevention (CDC) guidance, has established a phased priority group process for administering the vaccine. For a full list of priority groups.

As of January 13, 2021, NJ Department of Health has currently authorized phases for COVID-19 vaccination to include Phase 1a and certain individuals in Phase 1b including sworn law enforcement, fire professionals, and other first responders. These professions, as first responders, are the first priority group within Phase 1b. An announcement regarding when additional frontline essential workers and individuals at high risk will be eligible for the vaccine under Phase 1b and Phase 1c will be forthcoming from the NJ Department of Health.

Governor Phil Murphy announced two additional categories of New Jersey residents eligible to receive the COVID-19 vaccination. Beginning Thursday, January 14, all New Jersey residents ages 65 and older, and individuals ages 16-64 with certain medical conditions, as defined by the Centers for Disease Control and Prevention (CDC), that increase the risk of severe illness from the virus, are eligible for the COVID-19 vaccination. Those conditions include cancer, chronic kidney disease, COPD, Down Syndrome, heart conditions, obesity and severe obesity, sickle cell disease, smoking, and type 2 diabetes mellitus. Individuals who are pregnant and those in an immunocompromised state (weakened immune system) from solid organ transplant are also eligible but should follow CDC guidance and first discuss vaccination with their medical provider before receiving the vaccine.

Anyone not currently in Phase 1a or select 1b will have the opportunity to sign up below to be notified when it will be your time to schedule your appointment.

Camden County Vaccination Center is administering the Moderna Vaccine, which is which requires 2 doses 28 days apart. The FDA has authorized the emergency use of the Moderna Vaccine to prevent COVID-19 in adults 18 years of age and older under the Emergency Use Authorization. We cannot vaccinate persons younger than 18 years of age.

Vaccination Distribution:

The N.J. Department of Health has developed phases for the distribution of all vaccines. In Phase 1, there are three priority groups in two broad categories (critical workers and vulnerable populations) allowed to receive the COVID-19 vaccine. When scheduling your appointment, you will be required to attest that you fall in the current authorized phase for COVID-19 vaccination.

• Phase 1a (healthcare workers, long-term care facility residents and certain individuals in Phase 1b)

• Phase 1b (front line essential workers and persons aged 75 years and up)

• Phase 1c (all other essential workers and persons aged 65-74, persons with medical conditions that increase risk for severe COVID-19 disease)

• Phase 2 (remainder of Phase 1 and other critical populations)

Location and Hours:

• Camden County College, 200 College Dr, Blackwood, NJ

• Papiano Gymnasium (Building 10 on Map, Use Parking Lot P10 & P14)

• Monday-Saturday, 8 AM to 4 PM

• Blackwood Campus Map:

Scheduling Process Overview:

You will be able to schedule an appointment using a smartphone or computer. You will need to create or link a Cooper MyChart Account prior to scheduling your appointment. Your second dose appointment will be scheduled at the center while you are receiving your first vaccination.

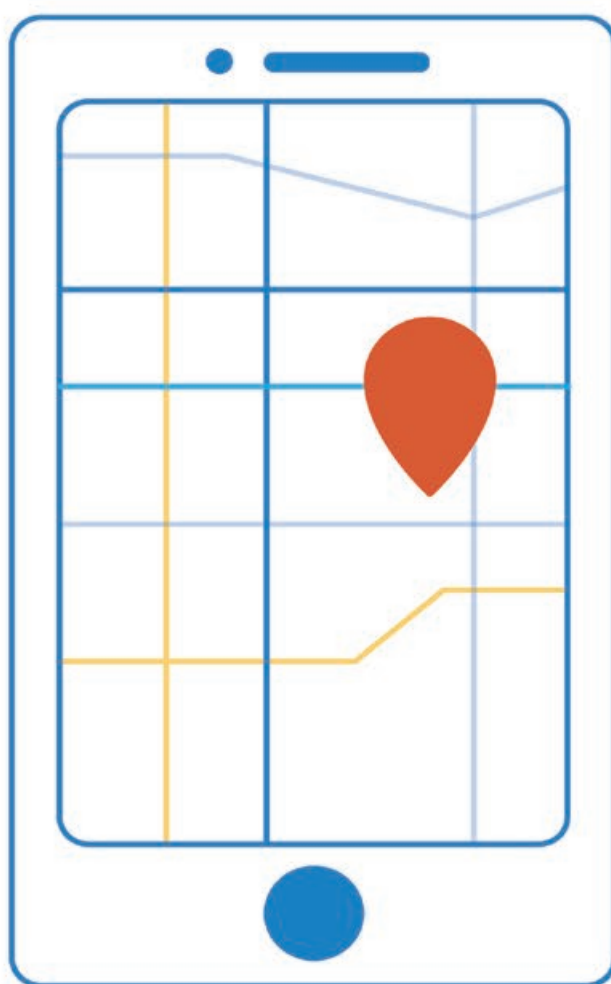
IMPORTANT! Scheduling for the vaccine using the New Jersey Vaccination Scheduling System will not schedule you at the Camden County Vaccination Center at Camden County College. If you have registered through the New Jersey Vaccination Scheduling System (NJVSS), you MUST still schedule with Camden County to get your vaccination at the Camden County Vaccination Center at Camden County College.

• Step 1: Create or link a Cooper MyChart Account using your mobile device or computer.

• Step 2: Once a Cooper MyChart is created, schedule your vaccine appointment.

• Step 3: eCheck-In is required to be completed prior to your appointment. This can be done up to 7 days prior to your appointment.

• Step 4: Arrive at location no earlier than 15 minutes prior to your appointment.



The doctor is always in at Inspira Urgent Care.

Somerdale location now open!

Open 7 days, 8 a.m. to 8 p.m. | 1 South White Horse Pike



*Get in line
Check wait times*

***inspira* HEALTH**

InspiraUrgentCare.org | 1-800-INSPIRA



Advanced Renewable Solutions



#Solar4SouthJersey

Did you sign something like this??

IF YOU DID, YOU GOT FOOLED!!!

End of Year	Annual Price per kWh (assuming payment NOT by ACH)	Annual Price per kWh (assuming payment by ACH)	Estimated kWh per year
1	\$0.153	\$0.139	6,816
2	\$0.157	\$0.143	6,782
3	\$0.162	\$0.147	6,748
4	\$0.166	\$0.151	6,714
5	\$0.171	\$0.155	6,680
6	\$0.176	\$0.160	6,647
7	\$0.181	\$0.165	6,614
8	\$0.186	\$0.169	6,581
9	\$0.192	\$0.174	6,548
10	\$0.197	\$0.179	6,515
11	\$0.203	\$0.185	6,482
12	\$0.209	\$0.190	6,450
13	\$0.215	\$0.195	6,418
14	\$0.221	\$0.201	6,386
15	\$0.226	\$0.207	6,354
16	\$0.234	\$0.213	6,322
17	\$0.241	\$0.219	6,290
18	\$0.248	\$0.225	6,258
19	\$0.255	\$0.232	6,226
20	\$0.263	\$0.239	6,197
21	\$0.270	\$0.246	6,166
22	\$0.278	\$0.253	6,135
23	\$0.286	\$0.260	6,104
24	\$0.294	\$0.268	6,074
25	\$0.303	\$0.275	6,043

Salesperson:
Brett Brugger
HIS #:

Salesperson Address:
Suntuity Solar LLC

2.9 % / year
\$0.139 / kWh
\$0.153 / kWh

DON'T LET YOUR FRIENDS AND FAMILY MAKE THE SAME MISTAKE!

WITH US YOU WILL KEEP YOUR STATE AND FEDERAL INCENTIVES

YOU PUT YOUR TRUST IN THEM AND THEY PUT THEIR TRUST IN US



LIFELONG SOMERDALE RESIDENT

856-371-1690

f Alex Lukacher – Solar4SouthJersey